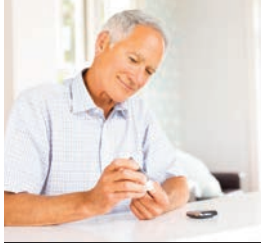


LIGHTING THE WAY TO BETTER HEALTH!

National direct-to-home supplier of
high quality medical products,
diabetes supplies and breast pumps.



ABOUT **OUR COMPANY**

Nationwide DME and HME
Mail Order Provider

Edwards Health Care Services, Inc. (EHCS) is your first-choice provider of direct-to-home, high quality medical products and diabetes supplies. For over 25 years, we have been lighting the way to better health by providing our customers an easier way to have products delivered directly to their door. By partnering with healthcare professionals, product manufacturers, and a large network of government and private insurers, we are able to fulfill our deep commitment of personalized customer service and a simplified order process for every customer...every time!

We participate with most major commercial insurance carriers, third party administrators, more than 40 Medicaid programs nationally, and are an approved supplier for traditional Medicare and Medicare Advantage plans. We strive to partner with new carriers every day to ensure we are meeting the needs across the nation.

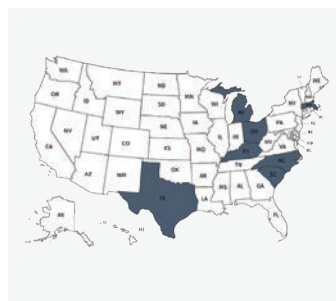
ADVANTAGES OF WORKING WITH US

We strive to keep every customer at the core of our business. We are constantly creating and innovating new processes and measurements to ensure we meet our customers' needs and deliver first-choice customer service.

Wide Selection of
BRANDS & PRODUCTS



Multiple Branch
LOCATIONS



Unparalleled
CUSTOMER SERVICE



Program Utilization
REPORTING



PRODUCTS WE OFFER

Our goal is to meet our customers' needs by having the supplies they need while making the ordering process simple and hassle-free. As a national DME and HME mail order provider, we carry a full line of diabetes products including continuous glucose monitors (CGM), glucose meters, test strips, lancets, insulin pumps, pen needles and breast pumps.



Customers can get fast, easy and convenient diabetes testing supplies from Edwards Health Care Services and enjoy free home delivery, educational materials, friendly refill reminders and a dedicated Customer Care Team. We carry blood glucose meters and batteries, test strips, lancing devices, lancets and control solution.



A Continuous Glucose Monitor (CGM) provides a constant stream of blood glucose level data, helps spot trends and reduces painful fingersticks. As a result, customers can better plan ahead. We carry the most popular Continuous Glucose Monitors for diabetes management. Most sensors last up to 10 or 14 days depending on the manufacturer's FDA approval.



Insulin pump therapy is a safe, simple way to achieve better glucose control, gaining more freedom and flexibility. We provide insulin pumps and all related supplies, including infusion sets, reservoirs, syringes, cartridges, batteries, prep wipes, and tape. We carry all major trusted brands, and our knowledgeable Diabetes Care Advisors help customers understand their options.



As a result of the Affordable Care Act, most insurances, including Medicaid plans, cover breast pumps at 100%. From confirming eligibility to obtaining a prescription, our Breast Pump Coordinators simplify the process and handle everything for the customer, including shipping the breast pump directly to the customer's home.

WE'RE HERE TO HELP

Our Diabetes Care Advisors truly understand the importance of quality products with personalized care.

The process of upgrading or getting brand new diabetes equipment for the first time can be overwhelming. Our goal is to provide customers with a first-rate experience through the entire process.

We pair customers with a dedicated Diabetes Care Advisor (DCA) to help throughout the process. From insurance approval and product selection to future reorders, our team of DCAs are committed to providing personalized care on time, every time!

" You have gone above and beyond to try and help me; you were efficient, kind and on top of things. I enjoyed speaking and working with you! "

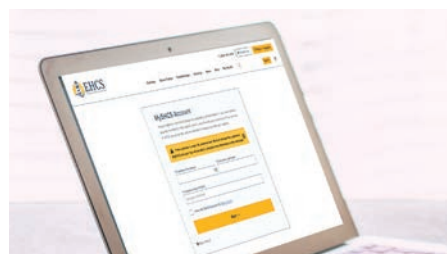
" Thank you for being so cordial and helpful to me when I was between a rock and hard place trying to secure my testing supplies. You have been stellar to work with, as have all your employees! "



SINGLE POINT OF CONTACT



POST SHIPMENT COMPLIANCE



CONVENIENT ONLINE ORDERING

DIABETES CARE ADVISORS PROVIDE:



Prompt Response

Reviewing benefit coverage within two business days



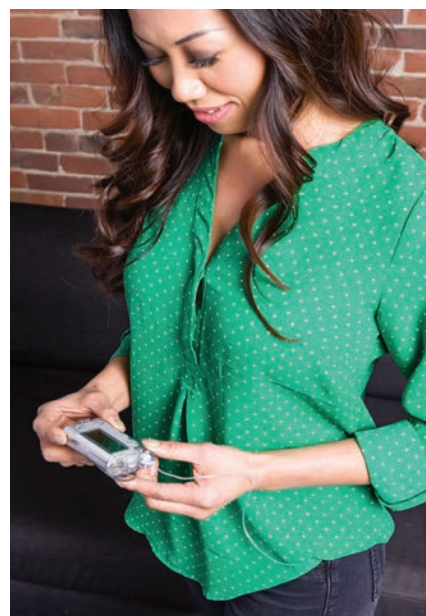
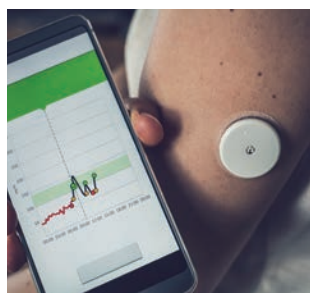
Constant Communication

Updates regarding application and process via phone or email



Paperwork

We work with doctors, labs and insurance companies handling all customers paperwork



We've partnered with the best, customer-focused manufacturers to ensure that all products are effective, safe and reliable. We regularly review and expand our product offering to ensure our customers have access to a wide range of products that meet their needs. Below is just a selection of manufacturers we've partnered with.

Diabetes Testing Supplies, Insulin Pumps and CGMs



Breast Pumps



ADDITIONAL PROGRAMS FOR OUR CUSTOMERS



OnTrack

Managing supplies has never been easier! OnTrack helps customers effectively manage their diabetes and reduce complications by receive their supplies on-time, every-time. Customers receive monthly or quarterly email reminders when their products ship.

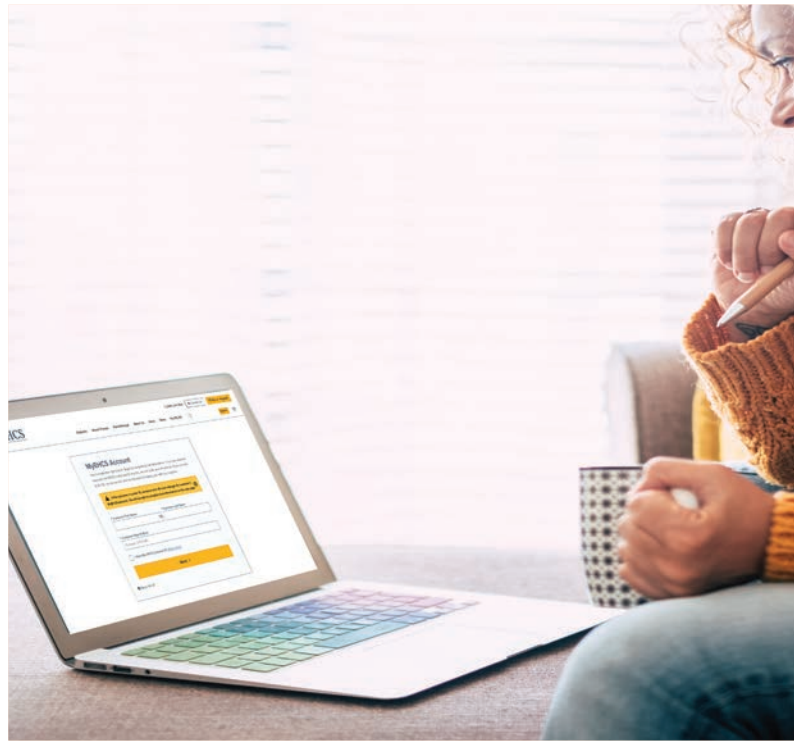
**All insurance items must be verified and approved for our OnTrack program.*



NutraVantage

NutraVantage is a wellness and support program designed specifically for moms, by moms regardless of where they are in their motherhood journey. Our Registered Dietitians educate on mother and baby nutrition, breastfeeding, sleep, stress and more.

Learn more at www.myehcs.com/nvformoms/



PARTNER WITH EHCS

We are here to answer any questions you may have about our product offering and our processes. If you would like to add Edwards Health Care Services to your list of approved suppliers, contact us at providercontracting@myehcs.com.

5640 Hudson Industrial Parkway
Hudson, OH 44236

1.888.344.3434

contactus@myehcs.com
www.myehcs.com



Edwards Health Care Services, Inc. (EHCS) is accredited by the Accreditation Commission for Health Care, Inc. (ACHC). ACHC, a private, not-for-profit corporation which is certified to ISO 9001:2008 standards, developed by home care and community-based providers to help companies improve business operations and quality of patient care.

CONNECT with US:

